

## Insertion / Extraction Tool

### Instructions for Use

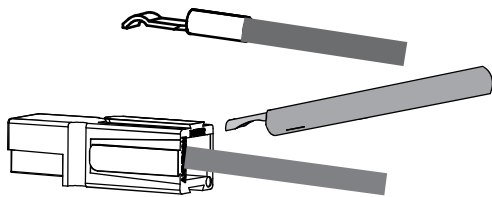


Figure 1

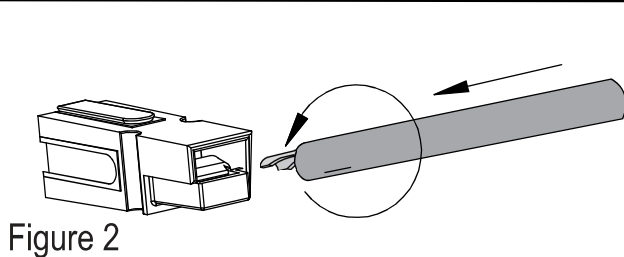
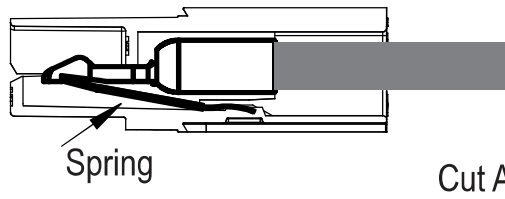


Figure 2

### INSERTION

Insert contact and wire into each housing from rear. Position contact (Figure 1) and, using insertion / extraction tool, push forward so contact slips under barrier and snaps over retaining spring. Repeat for all wires with contacts.

### EXTRACTION

Contact removal: place one forward prong of insertion / extraction tool between contact and spring; using rotary motion, pull wire until prong disengages contact from spring. Withdraw contact (Figure 2).

### WARNING

UTMOST CAUTION SHOULD BE USED WHEN WORKING ON LIVE CONNECTOR CONTACTS

### HEADQUARTERS:

13 Pratts Junction Road, Sterling, MA 01564-2305 T:978-422-3800 F:978-422-0128  
www.andersonpower.com